

An aerial photograph of the University of São Paulo campus. In the upper left, a large, modern, white building with a grid of windows is visible. The campus is filled with green trees and lawns. In the center, a tall, narrow, grey stone monument stands in a circular pool. The monument has a clock face at the top and several bas-relief carvings below. The pool is surrounded by a circular walkway with inscriptions in Portuguese. The overall scene is a well-maintained university grounds.

# USP

Universidade de São Paulo  
Brasil





**97,000 students**

**5,300 professors**

**340**

**Undergraduate courses**

**264**

**Graduate courses**

**Total area**

**76,810,000 m<sup>2</sup>**

**Ecological reserves**

**23,123,300 m<sup>2</sup>**

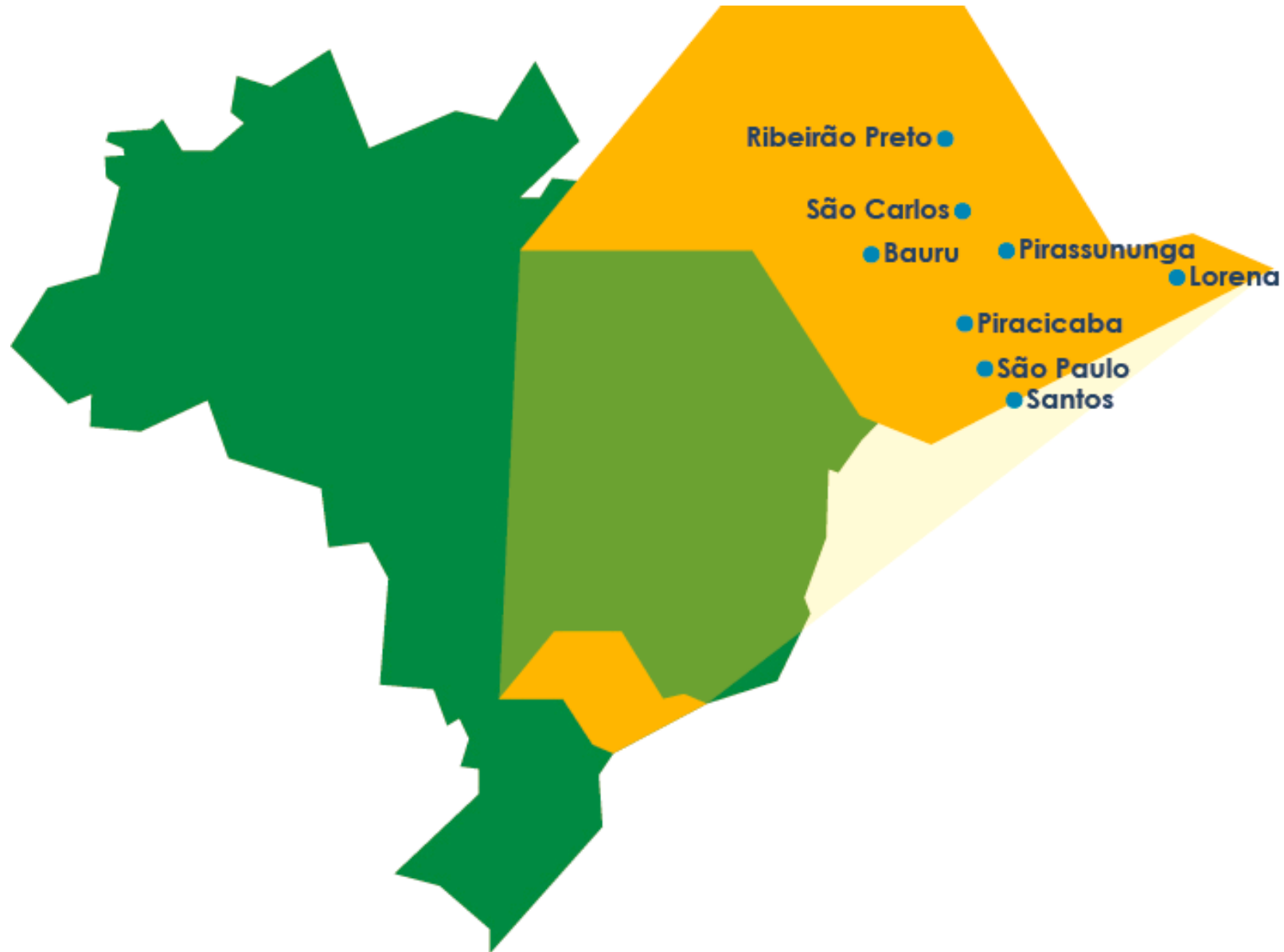




Foto: Divulgação/Esalq



Parque CienTec – Foto: Monolito Nimbus



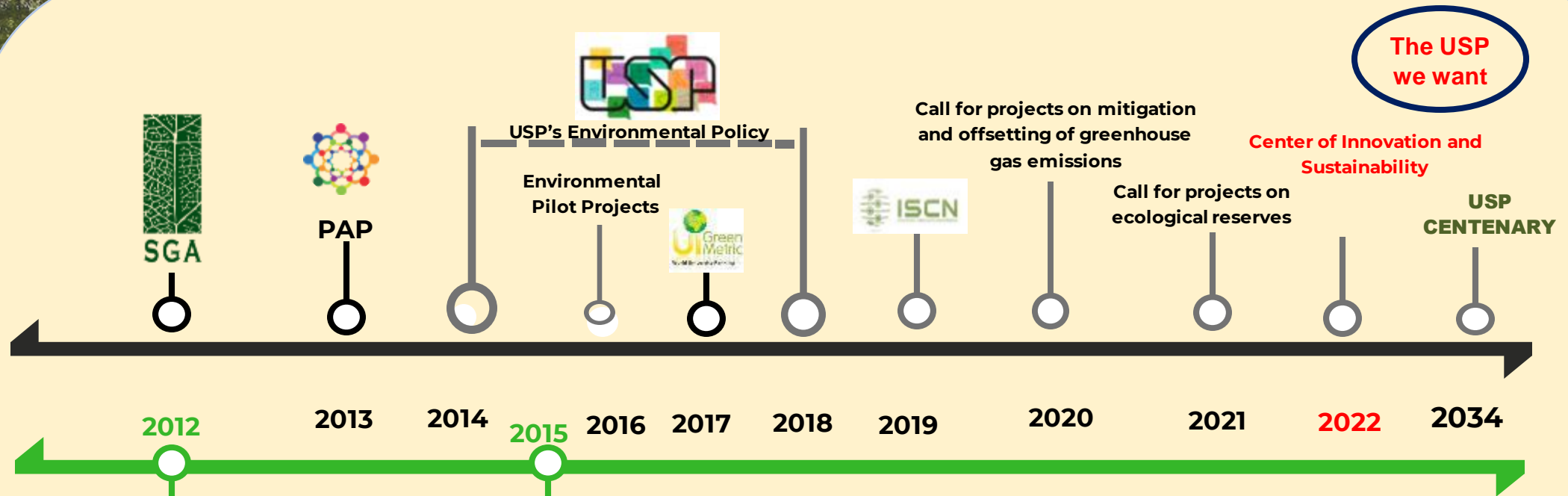
Foto: LEMaC



Foto: Jorge Maruta/USP Imagens



# SUSTAINABILITY AT USP - TIMELINE



Future We Want

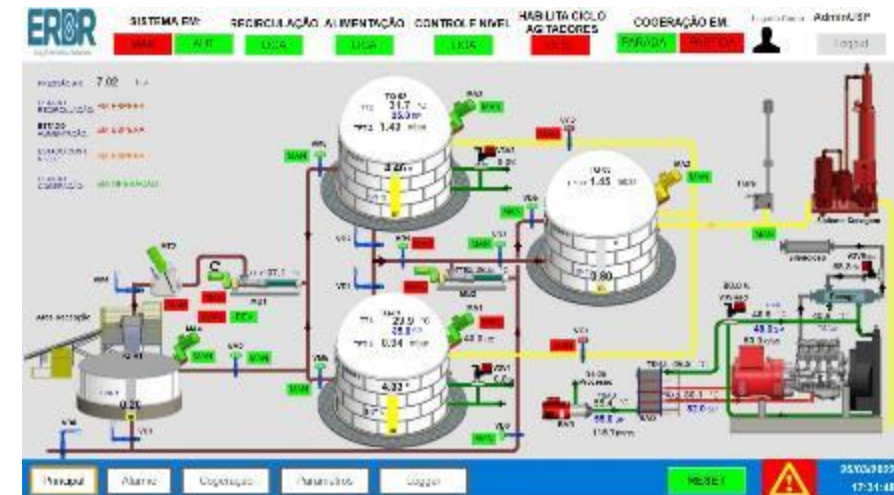
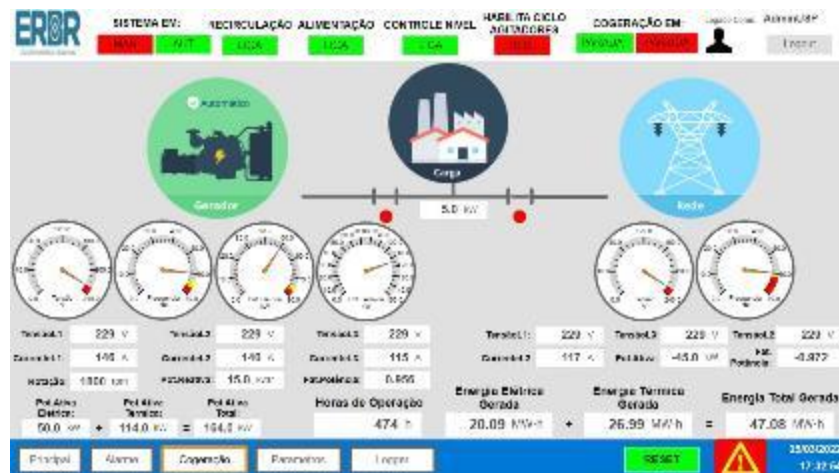
# EDUCATING ON THE BIGGEST (BIO) GAS CUASO IN SÃO PAULO



Education and participatory contribution to the use of solid waste from university restaurants, CRUSP, and the USP's daycare center in producing biogas in a biodigester.



<https://jornal.usp.br/institucional/15-projetos-para-diminuir-a-emissao-de-gases-de-efeito-estufa-na-usp/>





# GREEN AREAS AND ECOLOGICAL RESERVES



- Commitment to the conservation of its green areas and ecological reserves (2165.98 ha)
- **Specific budget: projects aimed at recovery and maintenance**
- Teaching, research and outreach activities



Piracicaba - Campus



Pirassununga - Campus



Ribeirão Preto - Campus

## Green Areas and Ecological Reserves conserved by the University of São Paulo

Campi	Green areas and ecological reserves (m <sup>2</sup> )	Total area of each campus (m <sup>2</sup> )	% of green areas and ecological reserves in each campus
Bauru	---	156,800	---
Lorena	81,600	373,400	21.85
Piracicaba	11,118,800	38,254,000	26.48
Ribeirão Preto	1,693,100	5,863,000	28.88
Pirassununga	8,816,200	22,690,000	38.86
São Paulo	1,059,700	7,919,700	13.38
São Carlos	357,100	1,554,700	22.97
Total	23,126,500	76,811,600	30.07

Source: Assessment of campuses land use made during the elaboration of USP's Environmental Management Plan, 2016; USP Statistical Yearbook, 2014.

# Guidelines for the Center of Innovation and Sustainability

- Contribute to the implementation of the Environmental Policy of the University of São Paulo (Resolution No. 7465, January 11, 2018)
- Encouraging partnerships among the University, the State, and Society to promote public policies in the socio-environmental area
- To house research laboratories linked to the Rector, in cooperation with Teaching Units, as well as to aggregate research groups on topics related to USP Sustainability, encouraging multidisciplinary collaborative activities
- Produce knowledge and innovation to reduce the impact of Climate Change
- Contribute to the consolidation of the ESG (Environmental-Social-Governance) agenda at the University
- Contribute to the training of undergraduate and graduate students in related topics
- More than 40 scholarships for projects directly related to the SDGs



Universidade de São Paulo  
Brasil

Thank you!

Denise Croce Romano Espinosa  
espinosa@usp.br